



IN THE
STYLE OF...

“SHAKE IT OFF”

by Taylor Swift

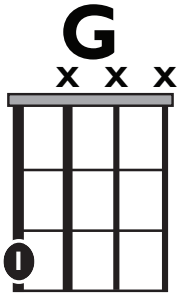
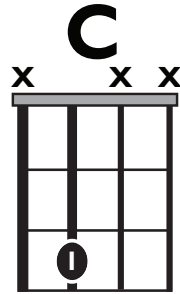
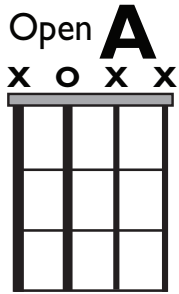


KEY OF SONG RECORDING: **G MAJOR**

TEMPO: **160 BPM**

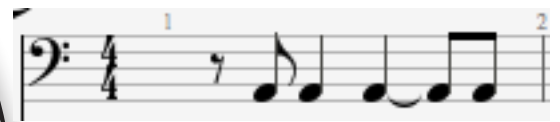
SONG FORM: **Intro, Verse 1, Pre-Chorus, Chorus, Verse 2, Pre-Chorus, Chorus, Break, Chorus**

CHORD PROGRESSION: **ii - IV - I**



Standard Notation Example

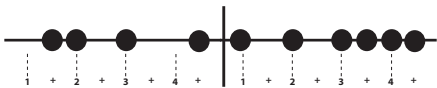
Bass Rhythms



Bass Scale

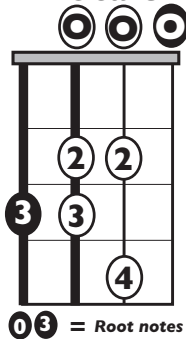


Bass Rhythms



SCALE!

G Major Scale



0 3 3 = Root notes